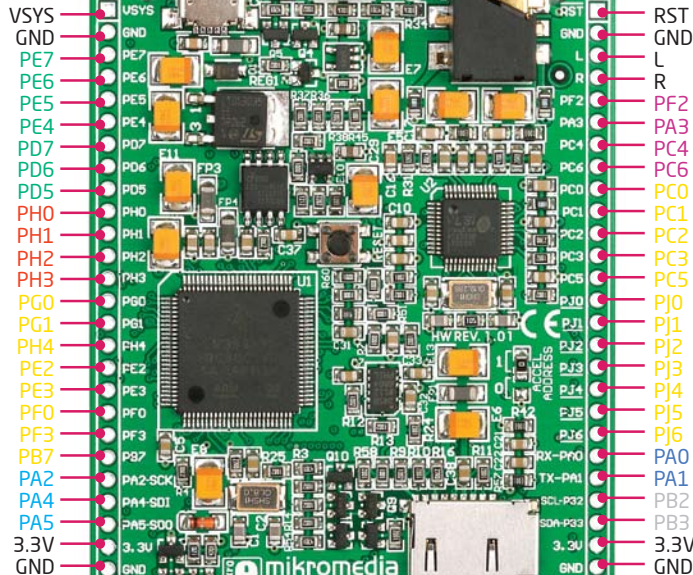


- System power supply
 - Reference Ground
 - Analog Lines
 - Interrupt Lines
 - Digital I/O lines
 - SPI Lines
 - 3.3V power supply
 - Reference Ground
- Pin functions



- Reset pin
 - Reference Ground
 - left ch.
 - right ch. } audio out
 - PWM lines
 - Digital I/O lines
 - UART Lines
 - I2C Lines
 - 3.3V power supply
 - Reference Ground
- Pin functions

■ Digital lines
 ■ Analog Lines
 ■ Interrupt Lines
 ■ SPI Lines
 ■ I2C Lines
 ■ UART lines
 ■ PWM lines

mikroMedia for Stellaris® M3 - Board dimensions

