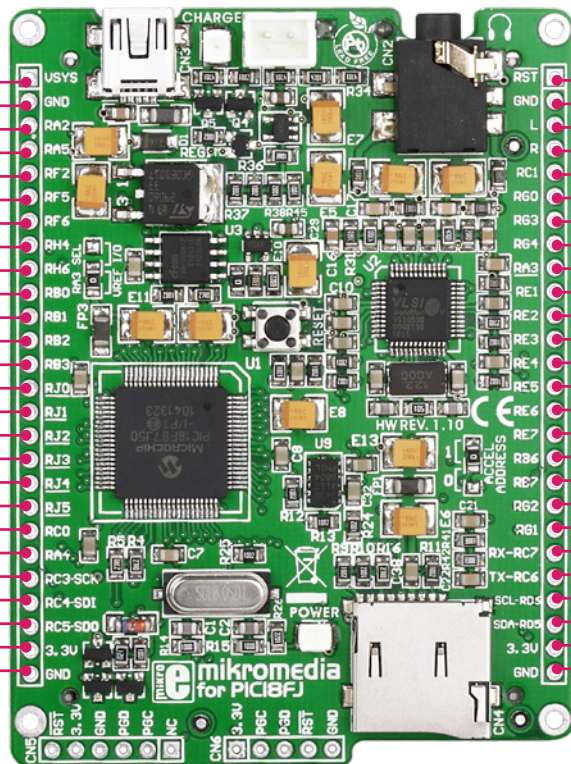


mikroMedia for PIC18FJ - pinout

- System power supply VSYS
- Reference Ground GND
- AN2/VREF- RA2
- AN4/C2INA RA5
- AN7/C2INB RF2
- AN10/ C1INB/CVREF RF5
- AN11/C1INA RF6
- AN12/P3C/C2INC RH4
- AN14/P1C/C1INC RH6
- FLT0/INT0 RB0
- INT1 RB1
- INT2 RB2
- INT3 RB3
- ALE RJ0
- OE RJ1
- WRL RJ2
- WRH RJ3
- BA0 RJ4
- CE RJ5
- T10S0/T13CKI RC0
- TOCKI RA4
- SCL1/SCK1 RC3
- SDA1/SDI1 RC4
- C2OUT/SDO1 RC5
- 3.3V power supply 3.3V
- Reference Ground GND

- USYS
- GND
- RA2
- RA5
- RF2
- RF5
- RF6
- RH4
- RH6
- RB0
- RB1
- RB2
- RB3
- RJ0
- RJ1
- RJ2
- RJ3
- RJ4
- RJ5
- RC0
- RA4
- RC3
- RC4
- RC5
- 3.3V
- GND



- RST - Reset pin
- GND - Reference Ground
- L - left ch.] audio out
- R - right ch.]
- RC1 - ECCP2/T10SI/P2A
- RG0 - ECCP3/P3A
- RG3 - CCP4/P3D
- RG4 - CCP5/P1D
- RA3 - AN3/VREF+
- RE1 - AD9/P2C
- RE2 - AD10/P2B
- RE3 - AD11/P3C/REFO
- RE4 - AD12/P3B
- RE5 - AD13/P1C
- RE6 - AD14/P1B
- RE7 - AD15/P2A
- RB6 - KB12/PGC
- RB7 - KB13/PGD
- RG2 - RX2/DT2
- RG1 - TX2/CK2
- RC7 - RX1/DT1
- RC6 - TX1/CK1
- RD6 - AD6/SCL2
- RD5 - AD5/SDA2
- 3.3V - 3.3V power supply
- GND - Reference Ground

---Pin functions---

---Pin functions---

- Programming lines
- Analog Lines
- Interrupt Lines
- SPI Lines
- I2C Lines
- UART lines
- PWM lines
- Comparator lines

mikroMedia for PIC18FJ - Board dimensions

