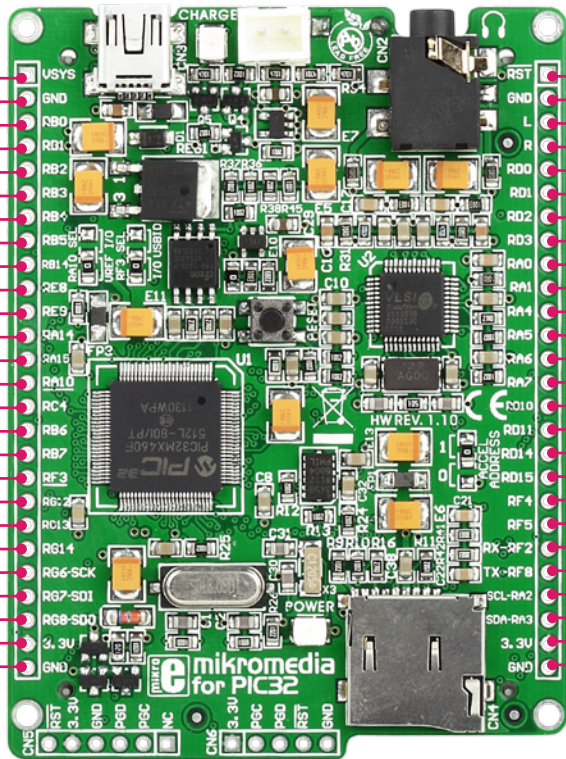


# mikroMedia for PIC32 - pinout

- System power supply - VSYS
- Reference Ground - GND
- PGD1/EMUD1/AN0/CN2 - RB0
- PGC1/EMUC1/AN1/CN3 - RB1
- C2IN-/AN2/CN4 - RB2
- C2IN+/AN3/CN5 - RB3
- C1IN-/AN4/CN6 - RB4
- C2IN+/AN3/CN5 - RB5
- AN14 - RB14
- INT1 - RE8
- INT2 - RE9
- SCL1/INT3 - RA14
- SDA1/INT4 - RA15
- VREF+/CVREF+ - RA10
- SDI1/T5CK - RC4
- PGC2/EMUC2/AN6 - RB6
- PGD2/EMUD2/AN7 - RB7
- USBID - RF3
- TRD1 - RG12
- TRD0 - RG13
- TRD2 - RG14
- SCK2/CN8 - RG6
- SDI2/CN9 - RG7
- SDO2/CN10 - RG8
- 3.3V power supply - 3.3V
- Reference Ground - GND

- VSYS
- GND
- RB0
- RB1
- RB2
- RB3
- RB4
- RB5
- RB14
- RE8
- RE9
- RA14
- RA15
- RA10
- RC4
- RB6
- RB7
- RF3
- RG12
- RG13
- RG14
- RG6-SCK
- RG7-SDI
- RG8-SDO
- 3.3V
- GND



- RST - Reset pin
- GND - Reference Ground
- L - left ch. ] audio out
- R - right ch. ]
- RD0 - SD01/OC1/INT0
- RD1 - OC2
- RD2 - OC3
- RD3 - OC4
- RA0 - TMS
- RA1 - TCK
- RA4 - TDI
- RA5 - TDO
- RA6 - TRCLK
- RA7 - TRD3
- RD10 - IC3/SCK1
- RD11 - IC4
- RD14 - CN20/U1CTS
- RD15 - U1RTS/BCLK1/CN21
- RF4 - U2RX/CN17
- RF5 - U2TX/CN18
- RF2 - U1RX
- RF8 - U1TX
- RA2 - SCL2
- RA3 - SDA2
- 3.3V - 3.3V power supply
- GND - Reference Ground

-- Pin functions --

-- Pin functions --

- Programing lines
- Analog Lines
- Interrupt Lines
- SPI Lines
- I2C Lines
- UART Lines
- PWM Lines
- Comparator Lines

# mikroMedia for PIC32 - Board dimensions

