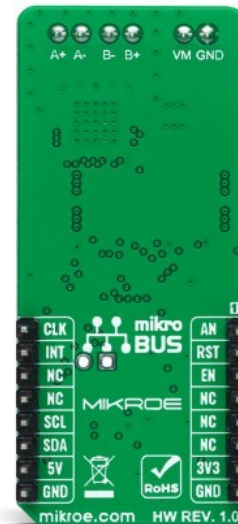


Multi Stepper Click - TB62262



PID: MIKROE-5037

Multi Stepper Click is a compact add-on board that contains a bipolar stepper motor driver. This board features the [TB62262FTG](#), CLOCK-in controlled bipolar stepping motor driver from [Toshiba Semiconductor](#). It supports a PWM constant-current control drive and allows full-, half-, and quarter-step operation for less motor noise and smoother control. It has a wide operating voltage range of 10V to 38V with an output current capacity of 1.2A in addition to several built-in error detection circuits. This Click board™ makes the perfect solution for stepping motors in various applications such as office automation, commercial, and industrial equipment.

Multi Stepper Click is supported by a [mikroSDK](#) compliant library, which includes functions that simplify software development. This [Click board™](#) comes as a fully tested product, ready to be used on a system equipped with the [mikroBUS™](#) socket.

How does it work?

Multi Stepper Click as its foundation uses the TB62262FTG, a two-phase bipolar stepping motor driver using a PWM chopper (customized by external resistance R2 and capacitor C1) from Toshiba Semiconductor. The TB62262FTG comes with a built-in clock-in decoder (CLOCK-in controlled), which means that each up-edge of the CLK signal, routed to the PWM pin of the mikroBUS™ socket, will shift the motor's electrical angle per step. It also incorporates a low on-resistance MOSFET output stage, which can deliver a 1.2A current with a motor output voltage rating of 38V, in addition to integrated protection mechanisms such as over-current and over-temperature detection. In addition, it allows full-, half-, and quarter-step resolution, with the help of which motor noise can be significantly reduced with smoother operation and more precise control.

Mikroe produces entire development toolchains for all major microcontroller architectures.

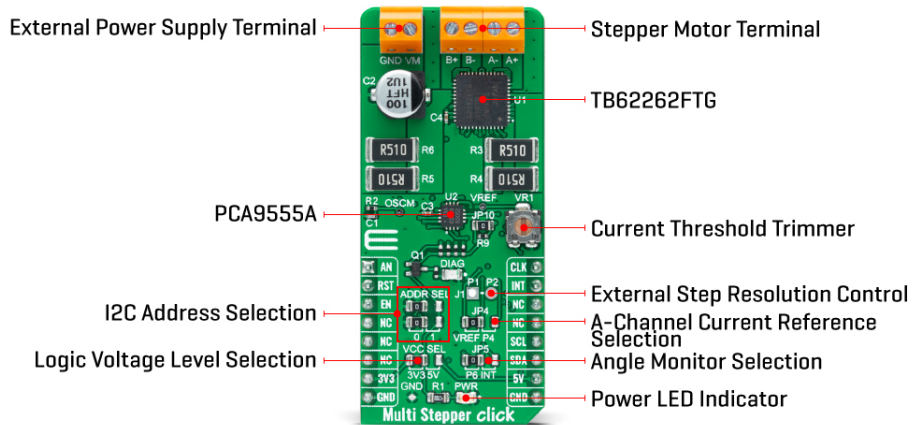
Committed to excellency, we are dedicated to helping engineers bring the project development up to speed and achieve outstanding results.



ISO 27001: 2013 certification of informational security management system.
 ISO 14001: 2015 certification of environmental management system.
 OHSAS 18001: 2008 certification of occupational health and safety management system.



ISO 9001: 2015 certification of quality management system (QMS).



As mentioned before, the TB62262FTG supports various step resolution configurations through its control signals. These control signals are provided through the [PCA9555A](#) port expander, which establishes communication with the MCU via the I2C serial interface. This Click board™ also allows a connection of external step-resolution control signals on the onboard header J1 on pins labeled as P1 and P2 for the device's DMODE1 and DMODE2 control. The PCA9555A also allows choosing the least significant bit (LSB) of its I2C slave address by positioning SMD jumpers labeled as ADDR SEL to an appropriate position marked as 0 and 1.

The output channels current value can be set manually using an onboard trimmer labeled as VR1, which sets the reference voltage from 0V to 3.3V. The default configuration of the JP4 jumper is the VREF position that sets both channels' output current via the VR1 trimmer. In this case, avoid position P4 on a jumper JP4 since the VREFA pin requires an analog signal for setting.

Also, this Click board™ has a Standby function, activated when step-resolution control signals are on its low logic state, used to switch to Standby mode by setting all motor control pins to a low logic state. When the Standby mode is active, the TB62262FTG stops supplying the power to the internal oscillating circuit and motor output part (the motor drive cannot be performed).

In addition to the I2C communication, several GPIO pins connected to the mikroBUS™ socket are also used. The Enable pin, labeled as EN and routed to the CS pin of the mikroBUS™ socket, optimizes power consumption used for power ON/OFF purposes. Also, a simple rotation direction function routed to the AN pin on the mikroBUS™ socket allows MCU to manage the direction of the stepper motor (clockwise or counterclockwise), while the RST pin of the mikroBUS™ socket initializes an electrical angle in the internal counter to set an initial position.

When it comes to angle monitoring, this driver has a dual way of monitoring selected by positioning SMD jumper labeled as JP5 to an appropriate position marked as P6 or INT, which choose to monitor via expander or INT pin of the mikroBUS™ socket. In the case of the selected INT position of the JP5 jumper, the JP10 jumper needs to be unpopulated. This Click board™ also has an additional LED for anomaly indication, but since this version of the stepper driver does not support this feature, this indicator cannot be used.

Multi Stepper Click supports an external power supply for the TB62262FTG, which can be connected to the input terminal labeled as VM and should be within the range of 10V to 38V, while the stepper motor coils can be connected to the terminals labeled as B+, B-, A-, and A+.

Mikroe produces entire development toolchains for all major microcontroller architectures.

Committed to excellency, we are dedicated to helping engineers bring the project development up to speed and achieve outstanding results.



ISO 27001: 2013 certification of informational security management system.
 ISO 14001: 2015 certification of environmental management system.
 OHSAS 18001: 2008 certification of occupational health and safety management system.



ISO 9001: 2015 certification of quality management system (QMS).


This Click board™ can operate with both 3.3V and 5V logic voltage levels selected via the VCC SEL jumper. This way, it is allowed for both 3.3V and 5V capable MCUs to use communication lines properly. However, the Click board™ comes equipped with a library containing easy-to-use functions and an example code that can be used, as a reference, for further development.

Specifications

Type	Stepper
Applications	Can be used for stepping motors in various applications such as office automation, commercial, and industrial equipment
On-board modules	TB62262FTG - CLOCK-in controlled bipolar stepping motor driver from Toshiba Semiconductor
Key Features	Low power consumption, capable of controlling 1 bipolar stepping motor, full-, half-, and quarter-step resolution, built-in clock decoder, integrated error detection circuits, and more
Interface	GPIO,I2C
Feature	No ClickID
Compatibility	mikroBUS™
Click board size	L (57.15 x 25.4 mm)
Input Voltage	3.3V or 5V,External
Driving Signal	Clock
Voltage Max	40V
Current Max	1.8A
Micro Step	4
RDSOn	0.8
ADMD	No
MO	Yes
Error Signal (LO)	No
ULVO	No

Pinout diagram

This table shows how the pinout on Multi Stepper Click - TB62262 corresponds to the pinout on the mikroBUS™ socket (the latter shown in the two middle columns).

Notes	Pin					Pin	Notes
Rotation Direction	AN	1	AN	PWM	16	CLK	Clock Signal
Reset	RST	2	RST	INT	15	INT	Interrupt
Enable	EN	3	CS	RX	14	NC	
	NC	4	SCK	TX	13	NC	

Mikroe produces entire development toolchains for all major microcontroller architectures.

Committed to excellency, we are dedicated to helping engineers bring the project development up to speed and achieve outstanding results.



ISO 27001: 2013 certification of informational security management system.
 ISO 14001: 2015 certification of environmental management system.
 OHSAS 18001: 2008 certification of occupational health and safety management system.



ISO 9001: 2015 certification of quality management system (QMS).

	NC	5	MISO	SCL	12	SCL	I2C Clock
	NC	6	MOSI	SDA	11	SDA	I2C Data
Power Supply	3.3V	7	3.3V	5V	10	5V	Power Supply
Ground	GND	8	GND	GND	9	GND	Ground

Onboard settings and indicators

Label	Name	Default	Description
LD1	PWR	-	Power LED Indicator
LD2	DIAG	-	LED for anomaly indication is not supported on this MCD version
JP1-JP2	ADDR SEL	Left	I2C Address Selection 0/1: Left position 0, Right position 1
JP3	VCC SEL	Left	Logic Level Voltage Selection 3V3/5V: Left position 3V3, Right position 5V
JP4	JP4	Left	A-Channel Current Reference Selection VREF/P4: Left position VREF, Right position P4
JP5	JP5	Left	Angle Monitoring Selection P6/INT: Left position P6, Right position INT
JP10	JP10	Populated	Angle Monitoring via Expander
J1	J1	Unpopulated	External Step Resolution Signals Connection Header
VR1	VR1	-	Current Threshold Trimmer
TP1	VREF	-	Voltage Reference Testpoint
TP2	OSCM	-	Oscillating Circuit Crequency Testpoint
TP3	GND	-	Ground Testpoint

Multi Stepper Click - TB62262 electrical specifications

Description	Min	Typ	Max	Unit
Supply Voltage VCC	3.3	-	5	V
External Supply Voltage VM	10	24	38	V
Motor Output Current	-	1.2	-	A
Motor Output Voltage	10	-	38	V
Operating Temperature Range	-20	+25	+85	°C

Software Support

Mikroe produces entire development toolchains for all major microcontroller architectures.

Committed to excellency, we are dedicated to helping engineers bring the project development up to speed and achieve outstanding results.



ISO 27001: 2013 certification of informational security management system.
 ISO 14001: 2015 certification of environmental management system.
 OHSAS 18001: 2008 certification of occupational health and safety management system.



ISO 9001: 2015 certification of quality management system (QMS).

We provide a library for the Multi Stepper TB62262 Click as well as a demo application (example), developed using MikroElektronika [compilers](#). The demo can run on all the main MikroElektronika [development boards](#).

Package can be downloaded/installed directly from NECTO Studio Package Manager(recommended way), downloaded from our [LibStock™](#) or found on [Mikroe github account](#).

Library Description

This library contains API for Multi Stepper TB62262 Click driver.

Key functions

- multisteppertb62262_set_step_mode This function sets the step mode resolution settings.
- multisteppertb62262_drive_motor This function drives the motor for the specific number of steps at the selected speed.
- multisteppertb62262_set_direction This function sets the motor direction by setting the AN pin logic state.

Example Description

This example demonstrates the use of the Multi Stepper TB62262 Click board™ by driving the motor in both directions for a desired number of steps.

The full application code, and ready to use projects can be installed directly from NECTO Studio Package Manager(recommended way), downloaded from our [LibStock™](#) or found on [Mikroe github account](#).

Other Mikroe Libraries used in the example:

- MikroSDK.Board
- MikroSDK.Log
- Click.MultiStepperTB62262

Additional notes and informations

Depending on the development board you are using, you may need [USB UART click](#), [USB UART 2 Click](#) or [RS232 Click](#) to connect to your PC, for development systems with no UART to USB interface available on the board. UART terminal is available in all MikroElektronika [compilers](#).

mikroSDK

This Click board™ is supported with [mikroSDK](#) - MikroElektronika Software Development Kit. To ensure proper operation of mikroSDK compliant Click board™ demo applications, mikroSDK should be downloaded from the [LibStock](#) and installed for the compiler you are using.

For more information about mikroSDK, visit the [official page](#).

Mikroe produces entire development toolchains for all major microcontroller architectures.

Committed to excellency, we are dedicated to helping engineers bring the project development up to speed and achieve outstanding results.



ISO 27001: 2013 certification of informational security management system.
 ISO 14001: 2015 certification of environmental management system.
 OHSAS 18001: 2008 certification of occupational health and safety management system.



ISO 9001: 2015 certification of quality management system (QMS).

Resources

[mikroBUS™](#)

[mikroSDK](#)

[Click board™ Catalog](#)

[Click boards™](#)

Downloads

[Multi Stepper Click - TB62262 schematic](#)

[TB62262FTG datasheet](#)

[PCA9555A datasheet](#)

[Multi Stepper Click - TB62262 2D and 3D files](#)

Mikroe produces entire development toolchains for all major microcontroller architectures.

Committed to excellency, we are dedicated to helping engineers bring the project development up to speed and achieve outstanding results.



ISO 27001: 2013 certification of informational security management system.
ISO 14001: 2015 certification of environmental management system.
OHSAS 18001: 2008 certification of occupational health and safety management system.



ISO 9001: 2015 certification of quality management system (QMS).