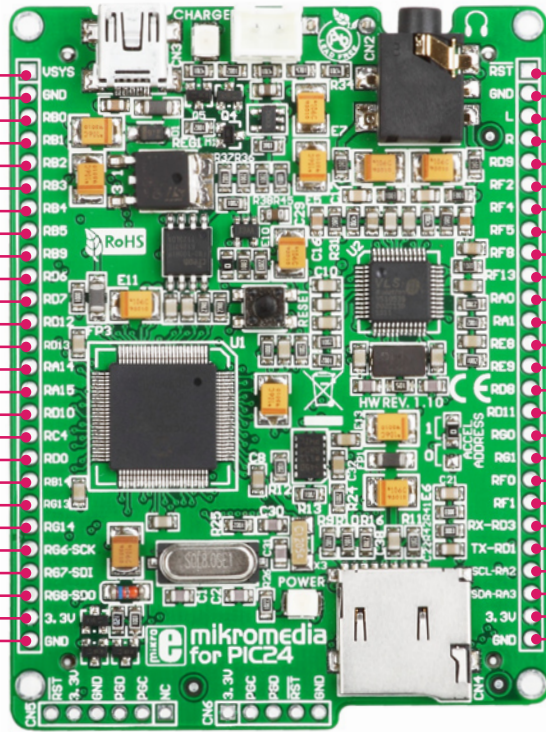


mikroMedia for PIC24 - pinout

- 5V power supply
- Reference Ground
- PGED1/RP0/AN0/CN2
- PGEC1/RP1/AN1/CN3
- RP13/C2INB/AN2/CN4
- VP10/C2INA/AN3/CN5
- PGED3/RP28/AN4/CN6
- PGEC3/RP18/AN5/CN7
- RP9/AN9/CN27
- C3INB/CN15
- C3INA/CN16
- RP142/CN57
- CN19
- RP136/SCL1/CN43
- RP135/SDA1/CN44
- RP3/PMCS2/CN55
- RP141/CN48
- RP11/DMH/CN49/INT0
- RP14/AN14/CN32
- CN80
- CN81
- RP21(SCK)/C1IND/CN8
- RP26(SDI)/C1INC/CN9
- RP19(SDO)/C2IND/CN10
- 3.3V power supply
- Reference Ground

- 5V
- GND
- RB0
- RB1
- RB2
- RB3
- RB4
- RB5
- RB9
- RD6
- RD7
- RD12
- RD13
- RA14
- RA15
- RD10
- RC4
- RD0
- RB14
- RG13
- RG14
- RG6
- RG7
- RG8
- 3.3V
- GND



- RST
- GND
- L
- R
- RD9
- RF2
- RF4
- RF5
- RF8
- RF13
- RA0
- RA1
- RE8
- RE9
- RD8
- RD11
- RG0
- RG1
- RF0
- RF1
- RD3
- RD1
- RA2
- RA3
- 3.3V
- GND

- Reset pin
- Reference Ground
- left ch.] audio out
- right ch.]
- RP4/DPLN/CN54
- RP30/CN70
- RP10/PMA9/CN17
- RP17/PMA8/CN18/
- RP15/CN74
- RP31/CN76
- TMS/CN33
- TCK/CN34
- RP133/CN66
- RP134/CN67
- RP2/DMLN/RTCC/CN53
- RP12/PMCS1/CN56
- CN77
- CN78
- VBUSST/VCMPST1/CN68
- VCMPST2/CN69
- RP22(RX)/PMBE/CN52
- RP24(TX)/VCPCON/CN50
- SCL2/CN35
- SDA2/CN36
- 3.3V power supply
- Reference Ground

Pin functions

Pin functions

- Programing lines
- Analog Lines
- Interrupt Lines
- SPI Lines
- I2C Lines
- UART Lines
- Remappable
- Comparator lines

mikroMedia for PIC24 - Board dimensions

